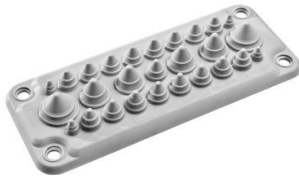


Product data sheet

Specifications



Cable entry membrane, PanelSeT, Spacial, type FL21 with 27 entrances IP66

NSYAECPFLT25

Product availability: Stock - Normally stocked in distribution facility

Price*: 24.48 USD

Overview

Lead Time Usually Ships within 4 Weeks

Main

Range	Spacial
Product Or Component Type	Cable entry membrane
Accessory / Separate Part Category	Cable management accessory
Device Application	Multi-purpose
Range Compatibility	Spacial Spacial S3D compact enclosure Spacial Spacial CRN compact enclosure Spacial Spacial SF suitable enclosure
Device Composition	1 membrane 1 fixing elements
Quantity Per Set	Set of 1

Complementary

Mounting Support	Cable gland plate
Material	TPE (thermoplastic elastomer)
Fixing Mode	By fixing element
Total Cable Entry Number	25
Cable Entry Number	4 x 0.20...0.28 in (5...7 mm) 4 x 0.31...0.47 in (8...12 mm) 4 x 0.55...0.79 in (14...20 mm) 12 x 0.39...0.55 in (10...14 mm) 1 x 0.79...1.02 in (20...26 mm)
Height	1.18 in (30 mm)
Width	External 8.43 in (214 mm) Fixing center 7.64 in (194 mm)
Depth	Fixing center 2.44 in (62 mm) External 3.46 in (88 mm)
Color	Gray RAL 7035)
Net Weight	0.71 lb(US) (0.32 kg)

Environment

Ip Degree Of Protection	IP66
Flame Retardance	V0 conforming to UL 94

Price is "List Price" and may be subject to a trade discount – check with your local distributor or retailer for actual price.

Ambient Air Temperature For Operation	-40...212 °F (-40...100 °C)
Environmental Characteristic	Oil resistant UL 157 FIMKO UV resistant Weatherproof Fire resistance UL 94 V0

Ordering and shipping details

Category	80036-ENCLOSURE SYSTEMS ACCESSORIES
Discount Schedule	ES1
Gtin	3606480169052
Returnability	No
Country Of Origin	FR

Packing Units

Unit Type Of Package 1	PCE
Number Of Units In Package 1	1
Package 1 Height	1.18 in (3 cm)
Package 1 Width	5.12 in (13 cm)
Package 1 Length	9.45 in (24 cm)
Package 1 Weight	10.65 oz (302 g)
Unit Type Of Package 2	CAR
Number Of Units In Package 2	20
Package 2 Height	7.87 in (20 cm)
Package 2 Width	15.75 in (40 cm)
Package 2 Length	11.81 in (30 cm)
Package 2 Weight	13.98 lb(US) (6.342 kg)
Unit Type Of Package 3	P12
Number Of Units In Package 3	400
Package 3 Height	21.26 in (54 cm)
Package 3 Width	31.50 in (80 cm)
Package 3 Length	47.24 in (120 cm)
Package 3 Weight	279.99 lb(US) (127 kg)

Contractual warranty

Warranty	18 months
-----------------	-----------

Sustainability

Green Premium™ label is Schneider Electric's commitment to delivering products with best-in-class environmental performance. Green Premium promises compliance with the latest regulations, transparency on environmental impacts, as well as circular and low-CO₂ products.

Guide to assessing product sustainability is a white paper that clarifies global eco-label standards and how to interpret environmental declarations.

[Learn more about Green Premium >](#)

[Guide to assess a product's sustainability >](#)



Transparency RoHS/REACH

Well-being performance

✓ Reach Free Of Svhc

✓ Toxic Heavy Metal Free

✓ Mercury Free

✓ Rohs Exemption Information Yes

Certifications & Standards

Reach Regulation

[REACH Declaration](#)

Eu Rohs Directive

Pro-active compliance (Product out of EU RoHS legal scope)

[EU RoHS Declaration](#)

China Rohs Regulation

[China RoHS declaration](#)

Pro-active China RoHS declaration (out of China RoHS legal scope)

Environmental Disclosure

[Product Environmental Profile](#)

Circularity Profile

No need of specific recycling operations